

EVANSVILLE COMMUNITY SCHOOL DISTRICT

Special Meeting Agenda of the Electors of the Evansville Community School District
Monday, April 11, 2011
5:30 p.m.

District Board and Training Center
320 Fair Street
Evansville, WI 53536

Note, public notice of this meeting given by posting at the District Office, Levi Leonard Elementary School Office, Theodore Robinson Intermediate School Office, J.C. McKenna Middle School Office, High School Office, Evansville School District Web Site: Evansville.k12.wi.us, and by forwarding the agenda to the Evansville Review, M&I Bank, Union Bank & Trust and Eager Free Public Library.

Please note that a majority of the school board members may be in attendance.

- I. Michael Pierick, President.
 - A. Call to Order.
 - B. Election of a Chairperson.

- II. To Consider the Purchase of Property of Lot 49, Berg Woodworth Petterson Subdivision, 660 Hillside Court, in the City of Evansville, for the Evansville High School Tech Ed Class to Build a Spec Home or Sell the Lot As Is.

- III. Suggested Motion: Mr. Chairperson: I Move That This Meeting Authorizes the Purchase of Property, of Lot 49, Berg Woodworth Petterson Subdivision, 660 Hillside Court, in the City of Evansville, for the Evansville High School Tech Ed Class to Build a Spec Home or Sell the Lot As Is.

- IV. To Consider the Subsequent Sale of Lot 49, Berg Woodworth Petterson Subdivision, 660 Hillside Court, in the City of Evansville, Which Shall Include All Improvements Made to the Property, by the Evansville High School Tech Ed Class or Sell the Lot As Is.

- V. Suggested Motion: Mr. Chairperson: I Move That This Meeting Authorizes the Sale of Property, of Lot 49, Berg Woodworth Petterson Subdivision, 660 Hillside Court, in the City of Evansville, Which Shall Include All Improvements Made to the Property, by the Evansville High School Tech Ed Class or Sell the Lot As Is.

- VI. Adjourn.

Mission Statement: *The Evansville Community School District, in active partnership with families and the community, will provide a positive learning environment that challenges all students to achieve personal excellence and become contributing citizens of the world community.*

Vision Statement:

Creating a culture of excellence in:

- *Academic achievement*
- *Character development*
- *Pursuit of arts, athletics, and other activities*
- *Community engagement*
- *Highly effective staff*

This notice may be supplemented with additions to the agenda that come to the attention of the Board prior to the meeting. A final agenda will be posted and provided to the media no later than 24 hours prior to the meeting or no later than 2 hours prior to the meeting in the event of an emergency.

Persons needing special accommodations or more specific information about the agenda items should call 882-5224, Ext. 3387, at least 24 hours prior to the meeting.

Posted: 3/21/11

SCHOOL DISTRICT MEETING

Call of Special Meeting

EVANSVILLE COMMUNITY SCHOOL DISTRICT

Notice to Electors of a Special Meeting of the Evansville Community School District, comprised of all or parts of the following municipalities, to wit: City of Evansville, Towns of Center, Magnolia, Janesville, Porter and Union, Rock County, Town of Brooklyn, Green County, and Town of Rutland, Dane County.

Notice is hereby given, that a Special Meeting of the above named district will be held on the 11th day of April A.D., 2011.

Notice is further given that the business to be transacted at said Special Meeting of said district will be as follows:

- (1) to hear, consider, and purchase Lot 49, Berg Woodworth Petterson Subdivision, 660 Hillside Court, in the City of Evansville, for the Tech Ed class to build a spec home or sell the lot as is.
- (2) to sell Lot 49, Berg Woodworth Petterson, 660 Hillside Court, in the City of Evansville, with a completed spec house or sell the lot as is.

TIME AND PLACE OF MEETING

Said Special Meeting of the electors of said district will be held in the District Board and Training Center, 340 Fair Street, Evansville, at 5:30 P.M. Central Daylight Time on April 11, 2011.

Dated this 21st day of March, 20 11.

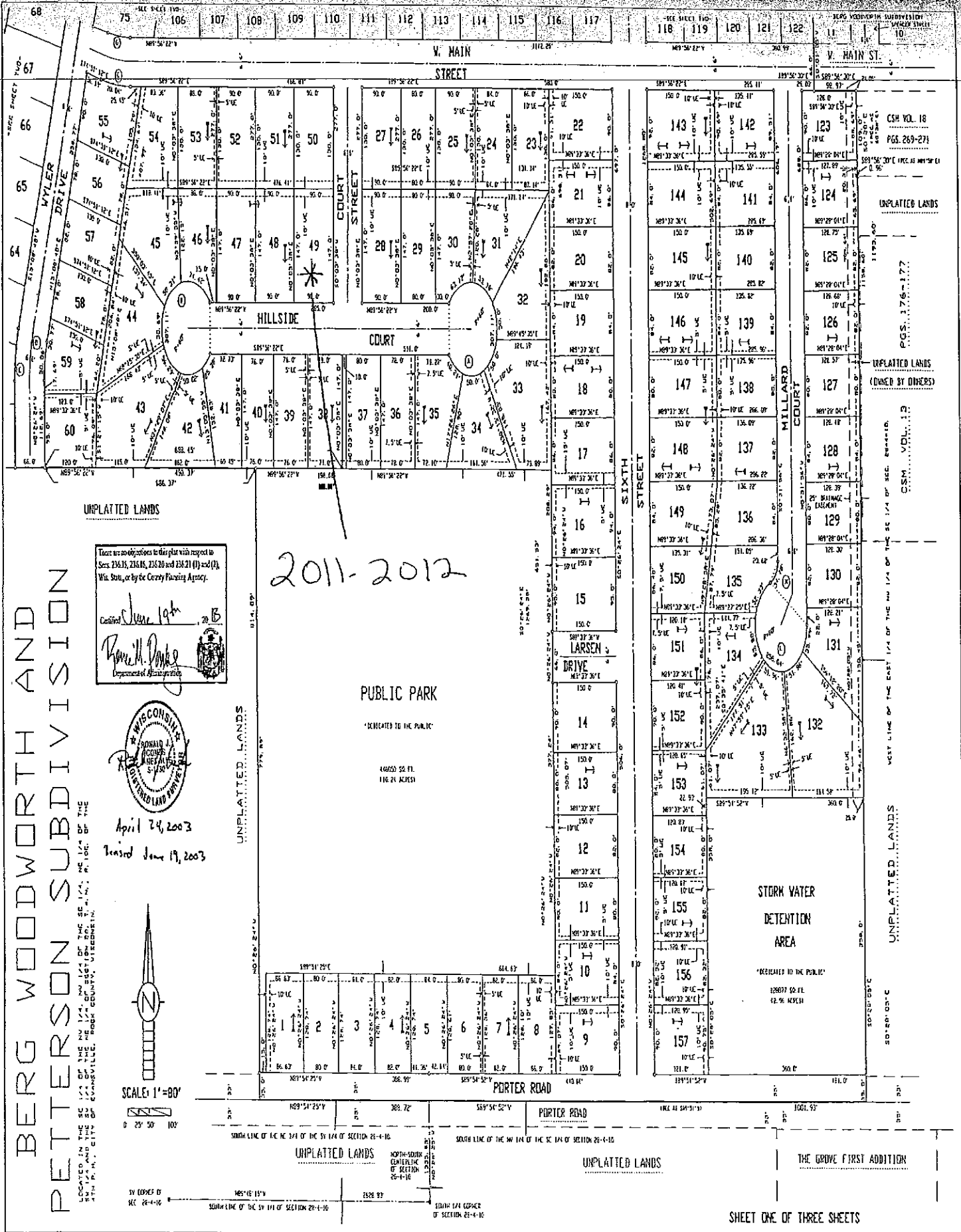
Kathi Swanson, District Clerk

Note, public notice of this meeting given by posting at the District Office, Levi Leonard Elementary School Office, Theodore Robinson Intermediate School Office, J.C. McKenna Middle School Office, High School Office, Evansville School District Web Site: www.evansville.k12.wi.us and by forwarding the agenda to the Evansville Review, M&I Bank, Union Bank & Trust and Eager Free Public Library.

Persons needing special accommodations or specific information should call 882-5224, Ext. 3387, at least 24 hours prior to the meeting.

Please note that it is anticipated that more than one-half of the school board members of the school board will attend the special meeting.

Posted: 3/21/11



There are no objections to this plan with respect to Secs. 236.15, 236.16, 236.20 and 236.21 (1) and (2), Wis. Stat., or by the County Planning Agency.

Caroline Jean Letz
Ronald M. Dwyer
 Department of Administration



April 24, 2003
 Revised June 19, 2003



SCALE: 1" = 80'
 0 25 50 100

2011-2012

PUBLIC PARK

DEDICATED TO THE PUBLIC

46650 SQ. FT.
 116.21 ACRES

STORM WATER
 DETENTION
 AREA

DEDICATED TO THE PUBLIC

CSM VOL. 18
 PGS. 269-271

UNPLATTED LANDS

UNPLATTED LANDS
 (OWNED BY OTHERS)

UNPLATTED LANDS
 (OWNED BY OTHERS)

UNPLATTED LANDS
 (OWNED BY OTHERS)

UNPLATTED LANDS
 (OWNED BY OTHERS)

UNPLATTED LANDS
 (OWNED BY OTHERS)

UNPLATTED LANDS
 (OWNED BY OTHERS)

UNPLATTED LANDS
 (OWNED BY OTHERS)

UNPLATTED LANDS
 (OWNED BY OTHERS)

UNPLATTED LANDS
 (OWNED BY OTHERS)

UNPLATTED LANDS
 (OWNED BY OTHERS)

UNPLATTED LANDS
 (OWNED BY OTHERS)

UNPLATTED LANDS
 (OWNED BY OTHERS)

UNPLATTED LANDS
 (OWNED BY OTHERS)

BERG WOODWORTH AND
 PETERSON SUBDIVISION

THESE LOTS ARE TO BE PLACED IN THE PUBLIC DOMAIN AND ARE TO BE OPEN TO ALL THE PEOPLE OF THE STATE OF WISCONSIN FOR THE USE AND ENJOYMENT THEREOF.

BY ORDER OF
 REC. 26-4-16

SOUTH LINE OF THE S 1/4 OF THE S 1/4 OF SECTION 26-4-16

SOUTH LINE OF THE S 1/4 OF THE S 1/4 OF SECTION 26-4-16

UNPLATTED LANDS

UNPLATTED LANDS

THE GROVE FIRST ADDITION